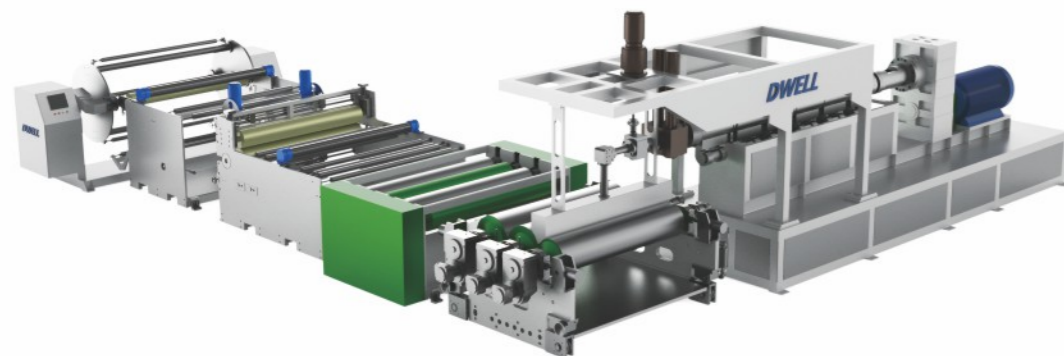
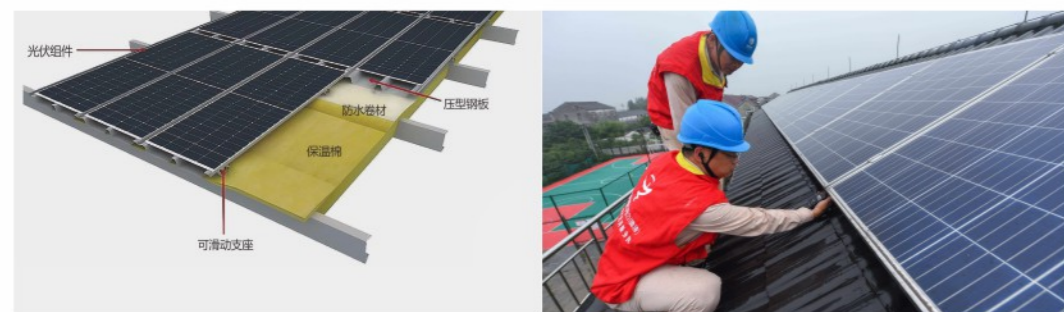


BIPV Building-integrated Photovoltaics

BIPV光伏建筑一体化

BIPV 就是光伏建筑一体化，是一种将太阳能发电的产品集成到建筑上的技术。

BIPV is the integration of photovoltaic buildings, which is a technology that integrates solar power generation products into buildings.

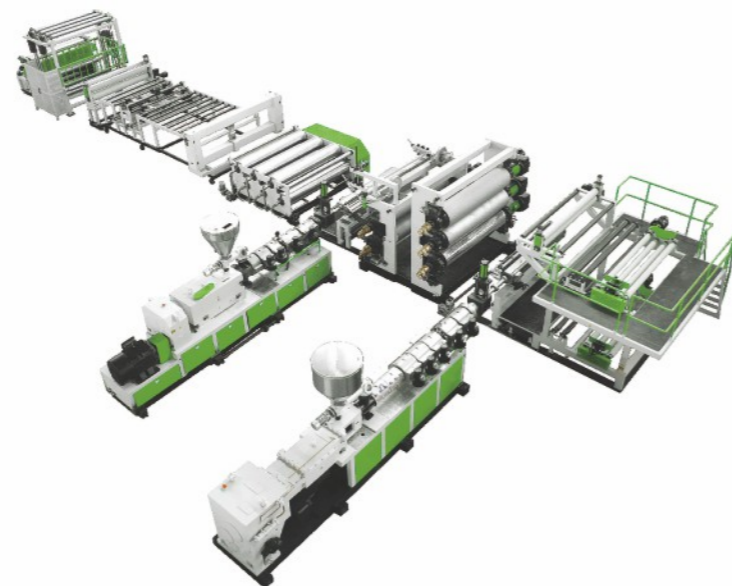


TPO Roofing Waterproof Roll Production Line

TPO高分子屋面防水卷材生产线

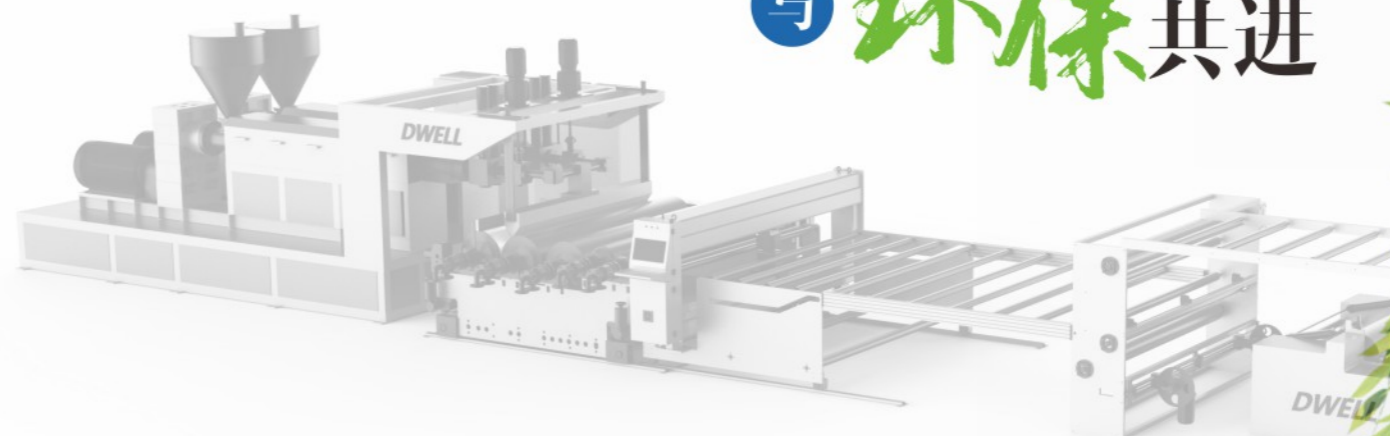
TPO防水卷材具有卓越的耐候性能和优异的热风焊接性能，拉伸强度高，伸长率大，适用于建筑外露或非外露的屋面防水层，尤其适用于轻型钢结构屋面，可以完美匹配光伏屋面施工。是大型工业厂房、公用建筑、光伏一体化建筑等屋面的首选防水材料。

TPO waterproofing membrane has excellent weather resistance and excellent hot air welding performance, high tensile strength, and high elongation. It is suitable for exposed or non exposed roof waterproofing layers in buildings, especially for lightweight steel structure roofs, and can perfectly match photovoltaic roof construction. It is the preferred waterproof material for roofs of large industrial factories, public buildings, and photovoltaic integrated buildings.



DWELL®

与光伏同行
与环保共进



DWELL®

东莞市杰伟机械制造有限公司
Dongguan Jwell Machinery Co., Ltd.
www.dwell-extrusion.com
www.dwell-extrusion.cn

广东省东莞市东坑镇长安塘井头58号
Add: No.58, Jingtou, Changantang, Dongkeng Town,
Dongguan City, Guangdong Province, China.
Tel: 0769-8388 9858 15818329696
Fax: 0769-8338 9858
E-mail: sales@dwell-extrusion.com

安徽杰伟挤出机械制造有限公司
Anhui Dwell Extrusion Machinery Co., Ltd.
安徽省滁州市琅琊区杭州北路555号
Add: No.555 Hangzhou North Road,
Langya District, Chuzhou, Anhui.

ETFE Photovoltaic and Construction Film Extrusion Line

ETFE光伏/建筑薄膜生产线

ETFE膜材料在航天航空、光伏产业、电子半导体领域、5G及薄膜建筑等领域具有广泛的用途，但目前ETFE的生产技术难度大，其核心的生产、加工关键技术大多数由国外公司所掌握。东莞杰伟机械最新研发的ETFE流延膜生产线，借鉴了日本同类生产线的经验，在螺杆，模具，成型以及冷却和收卷的所有部件进行了深度的研究和改良，形成了一套针对于ETFE材料模块化的处理系统。

ETFE film have a wide range of applications in aerospace, photovoltaic industry, electronic semiconductor field, 5G and thin film construction, etc. However, the production technology of ETFE is currently difficult, and most of its core production and processing key technologies are mastered by foreign companies. The latest ETFE casting film production line developed by DWELL Machinery has borrowed the experience of similar Japanese production lines and conducted in-depth research and improvement on all components of screws, T-DIE, forming, cooling, and winding, forming a modular processing system for ETFE materials.

PP/PE/PET Composite pv Backplane Film Extrusion Line

PP/PE/PET类光伏背板挤出生产线

PP、PE、PET因各自的性能在无氟背板中得到大量的应用，经过改性强化之后的产品具有优良的绝缘性能、低热阻、低水汽渗透率、低收缩率、机械强度高。

PP, PE, and PET have been widely used in fluorine-free backplane due to their respective characteristic. After modification and strengthening, the products have excellent insulation performance, low thermal resistance, low water vapor permeability, low shrinkage rate, and high mechanical strength.

PVDF Film of Solar Backplane Extrusion Line

PVDF太阳能背板膜生产线

PVDF薄膜（聚偏二氟乙烯薄膜）是流涎拉伸加工制成的薄膜。PVDF材料有很多优点，如：高耐磨性、高耐腐蚀性、高抗老化性、耐热稳定性好、阻燃（低烟）、抗紫外线和核辐射性、抗冲击性能、耐候性强、机械强度与韧度高、防霉菌性。

PVDF薄膜可用于太阳能背板膜、户外装饰薄膜、电池隔膜、过滤膜、压电薄膜。

PVDF film (polyvinylidene fluoride film) is a thin film produced by casting and stretching processing. PVDF materials have many advantages, such as high abrasion resistance, high corrosion resistance, high aging resistance, good heat stability, flame retardancy (low smoke), ultraviolet and nuclear radiation resistance, impact resistance, strong weather resistance, high mechanical strength and toughness, and mold resistance.

PVDF film can be used for solar panel film, outdoor decorative film, battery separator, filter film, and piezoelectric film.

EVA/POE/PVB/SGP Film Extrusion Line

EVA/POE/PVB/SGP胶膜生产线



EVA/POE胶膜

用于太阳能电池组件的封装，层压固化后粘合密封，对电池组件起到高透光率，阻止水汽渗透，耐高低温，抗紫外光等作用，确保电池组件的稳定高效使用。同时也用于建筑物玻璃幕墙、汽车玻璃、功能性棚膜、包装膜、热熔胶等各种行业。

EVA/POE adhesive film

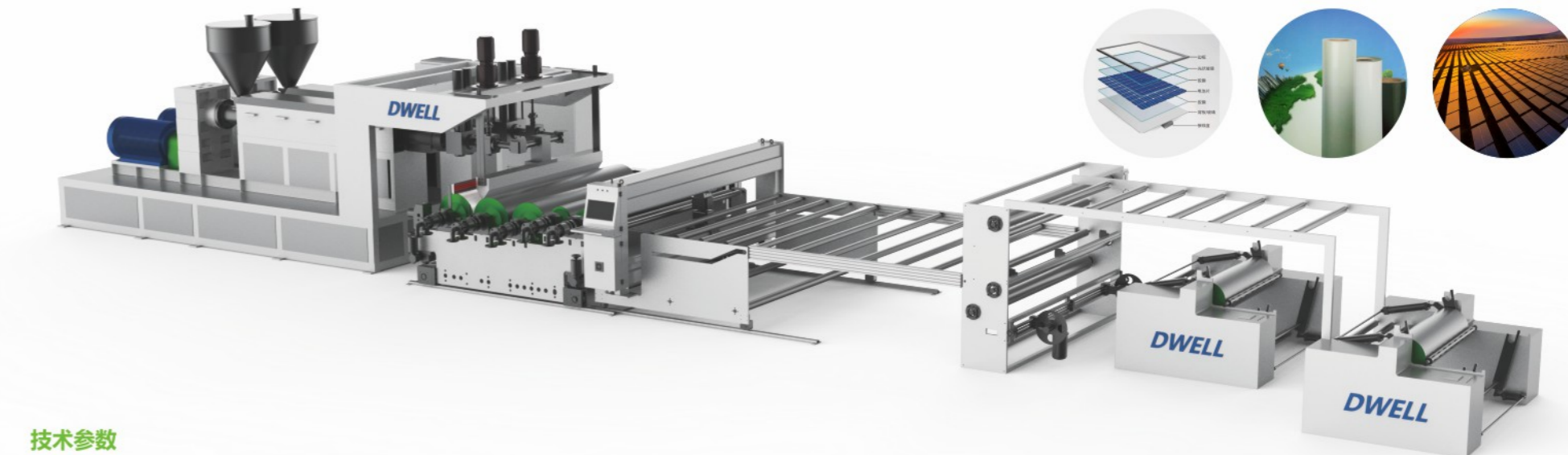
Used for packaging solar cell modules, laminated and cured, bonded and sealed, providing high transparency, preventing water vapor penetration, high and low temperature resistance, and UV resistance, ensuring the stable and efficient use of battery modules. It is also used in various industries such as building glass curtain walls, automotive glass, functional greenhouse films, packaging films, and hot melt adhesives.

PVB/SGP胶膜

广泛应用于建筑夹层玻璃，汽车夹层玻璃，太阳能光伏玻璃，防弹玻璃，隔音玻璃等，具有很好的安全性，防止玻璃由于外力作用下破碎溅起伤人；具有隔音性，防紫外线，可以做成彩色或高透明的薄膜。

PVB/SGP adhesive film

Widely used in building laminated glass, automobile laminated glass, solar photovoltaic glass, bulletproof glass, soundproof glass, etc., with good safety, to prevent the glass from being broken and splashed under external force to hurt people; It has sound insulation and UV resistance, and can be made into colored or highly transparent films.



技术参数

型号 Model	EVA/POE光伏电池封装胶膜生产线			PVB/SGP胶膜生产线		
挤出机编号 Extruder Model	DWS180/36	DWS160+DWS160 共挤	DWS180+DWS180 共挤	DWS150/36	DTS95	DTS110
最大宽度 Maximum Products Width	2400mm	2800mm	2800mm	2600mm	3000mm	3600mm
最大挤出产量 Maximum Output	550kg/H	900kg/H	1100kg/H	500kg/H	600kg/H	1200kg/H
生产速度 Production Speed	8-12m/min	8-20m/min	8-20m/min	8-10m/min	8-10m/min	8-20m/min
制品厚度 Products Thickness	0.2mm-0.8mm	0.2mm-0.8mm	0.2mm-0.8mm	0.38mm-1.52mm	0.38mm-1.52mm	0.38mm-1.52mm

备注: 以上规格参数如有变更, 恕不另行通知。Note: The specifications are subject to change without prior notice.